

UKSW Welcome Centre
PRESENTS

International Students

Guide



UKSW

**CARDINAL STEFAN
WYSZYŃSKI UNIVERSITY
IN WARSAW**

UKSW Welcome Centre
Wóycickiego 1/3 Street, build. 23, room 113
01-938 Warsaw, Poland

The Project funded by the Polish National Agency for Academic Exchange
under the Welcome to Poland Programme (2022)



CONTENTS:

1. UKSW - About us
2. Poland - General Information
3. 10 things to do in Poland
4. Transportation in Warsaw
5. Accommodation
6. Legalisation of Stay
7. Healthcare
8. Useful Expressions
9. Contact

UKSW - About us

We educate 11 000 students in 95 fields of study, including **medicine, psychology, law, journalism, environmental engineering, Italian philology and economics**. Cardinal Stefan Wyszyński University in Warsaw is distinguished by its experienced, highly specialized academic staff and modern scientific facilities. The roots of UKSW go back to the **Academy of Catholic Theology**, which in 1999 turned into a broad-profile university. Currently, it has **12 faculties: Biology and Environmental Sciences, Mathematics and Natural Sciences. School of Exact Sciences, Faculty of Medicine. Collegium Medicum, Historical Sciences, Humanities, Pedagogical Sciences, Law and Administration, Faculty of Social and Economic Studies and four so-called church faculties – Theology, Canon Law, Family Studies and Christian Philosophy**, which, in addition to the supervision of the Ministry of Education and Science, are subject to the authority of the ecclesiastical authorities. The youngest unit is the UKSW **Faculty of Medicine. Collegium Medicum**.



UKSW - About us



UKSW students acquire knowledge in **the full-time and part-time system**, in uniform master's studies and first- and second-cycle studies. The University also gives you the opportunity to improve your professional qualifications at postgraduate studies and at the Doctoral School. The teaching and research staff of UKSW consists of about **760 academic teachers**, many of whom annually receive prestigious awards for scientific, research and teaching activities. UKSW has 14 authorizations to confer doctoral degrees and 10 authorizations to award habilitation degrees. In recent years, the Cardinal Stefan Wyszyński University has transformed into a modern scientific and research center. UKSW's infrastructure consists of three campuses: in Bielany at 5 Dewajtis Street, in Młociny at 1/3 Wóycickiego Street and in Dziekanów Leśny near Warsaw.

UKSW - About us

On the **Wóycickiego campus** in the **Mazovian Laboratory Center for Natural Sciences**, which is equipped with the most modern equipment for conducting analyses and experiments, practical classes for students of exact and medical sciences are held. The latest investment on the Wóycickiego campus is the modern Collegium Medicum building, opened in spring 2022. On the campus in Dziekanów Leśny, which is of a research and scientific nature, a Multidisciplinary Research Center has been launched. Its purpose is to implement innovative solutions of digital and IT technologies to the social and economic environment. The university also has a modern Sports Hall with an auditorium for 230 seats and a radio and television studio.



Wóycickiego Campus



Dewajtis Campus



Dziekanów Leśny Campus





How to get to our University?

Wóycickiego Campus

You need to take bus :

- nr 181 (bus stop Żubrowa-UKSW);
- nr 114 (bus stop Żubrowa-UKSW or Młociny-UKSW);
- nr 303 (bus stop Żubrowa-UKSW);
- nr 150 (bus stop Park Młociński);
- nr 750 (bus stop Park Młociński).

Dewajtis Campus

You need to take bus:

- nr 103 (bus stop UKSW)
- nr 121 (bus stop UKSW)
- nr 181 (bus stop UKSW)
- nr 850 (bus stop UKSW)

or trams nr 6 or 17 to tram stop UKSW

.... and after that there is nice walk through the forest :-)



Dziekanów Leśny Campus

You need to take bus:

- nr 150 (bus stop Graniczka 02)

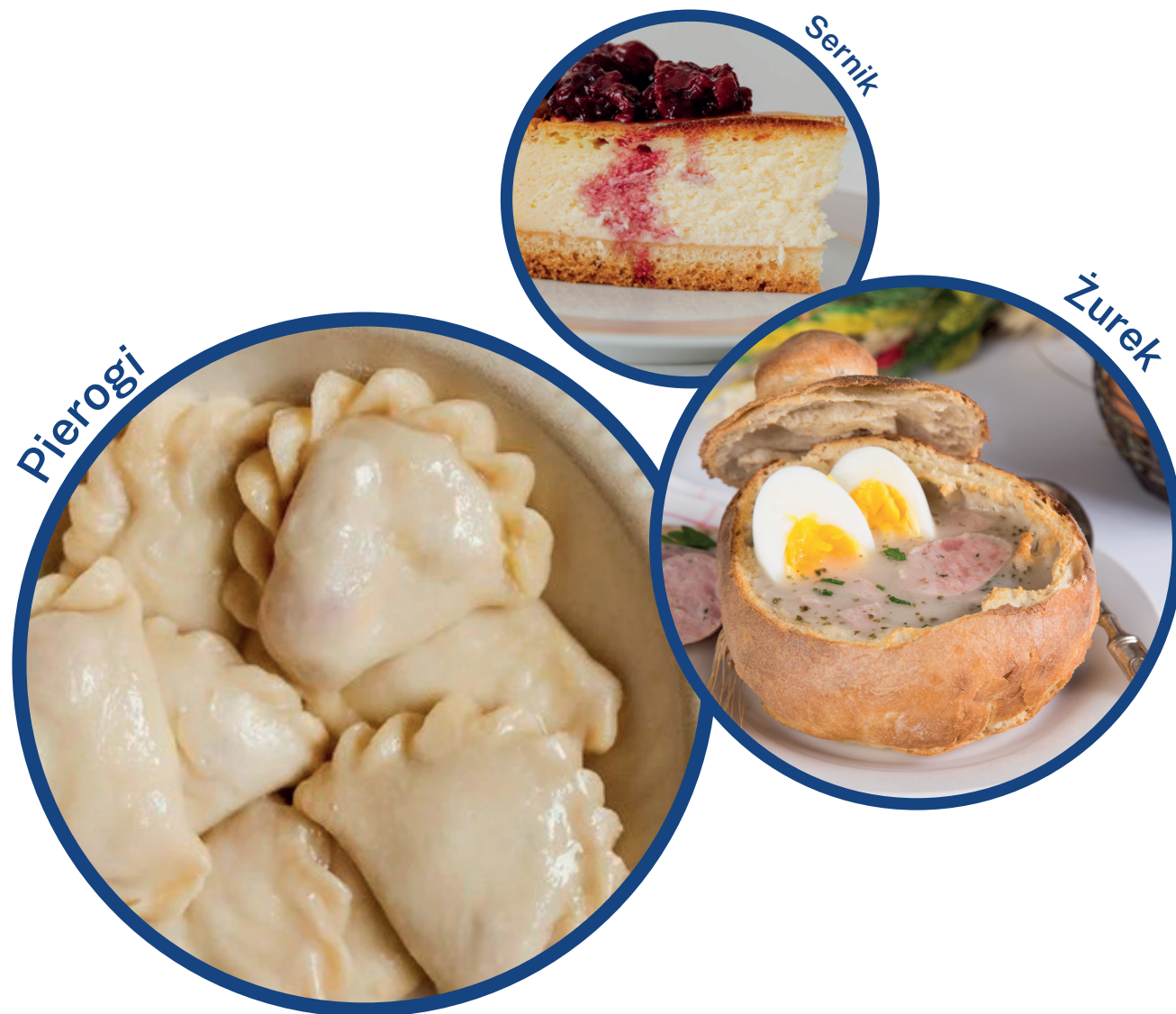
More info you can find at : www.jakdojade.pl or
download the app [jakdojade.pl](http://www.jakdojade.pl)

Poland - general information

Official name:	Republic of Poland, Rzeczpospolita Polska
Language:	Polish
Capital city:	Warsaw
Population:	38 milion
Currency:	1 zloty = 100 groszy
Calling code:	+48
Internet domain:	pl

10 things to do in Poland

1. Try Polish food like pierogi, bigos, żurek, barszcz, oscypek, or some Polish sweets like sękacz, sernik, kremówka and sweets like krówka or ptasie mleczeko



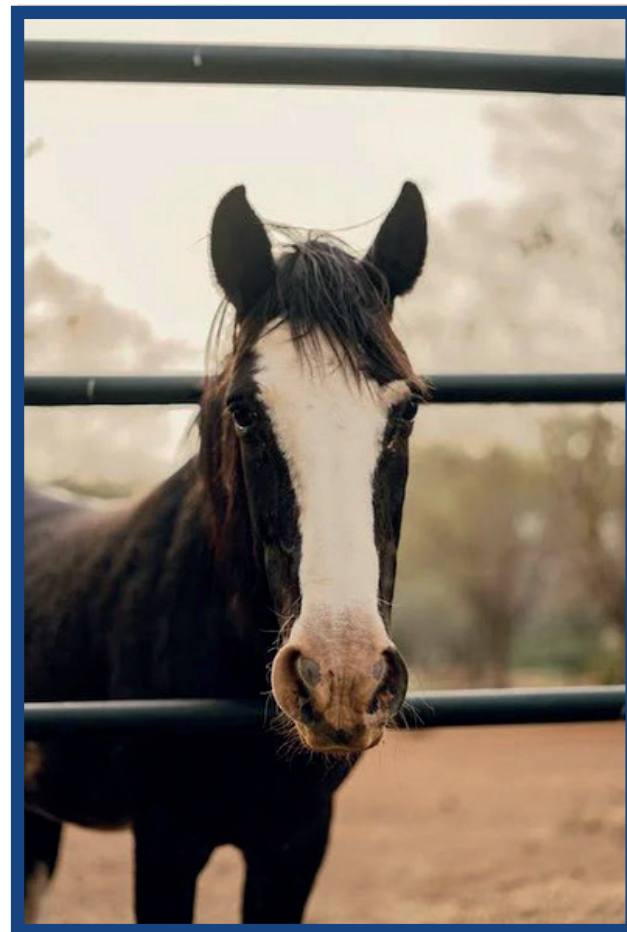
10 things to do in Poland

2. Sailing in the Masurian Lake District
3. Kayaking on one of the rivers in Poland



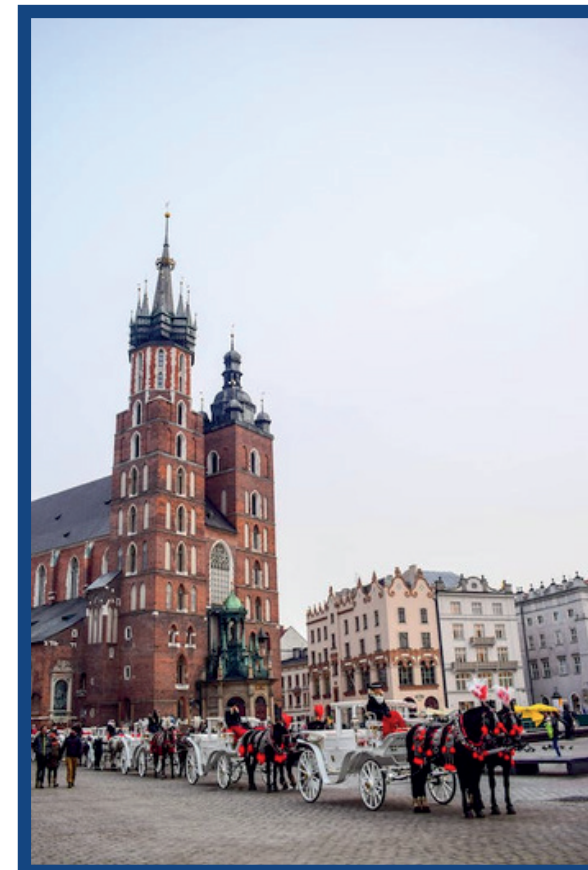
10 things to do in Poland

4. Meet the Polish Bison in Białowieża National Park
5. Visiting a real Polish village



10 things to do in Poland

6. Listening to Hejnał Mariacki (Cracow's Anthem), which is played by a trumpeter on the highest tower of St. Mary's Church in Cracow
7. Finding out how many dwarfs there are in Wrocław



10 things to do in Poland

- 8. Skiing in Tatra Mountains
- 9. Try to draw Easter egg



Source: <https://study.gov.pl/25-things-do-poland>(access : 22.08.2023)

10 things to do in Poland

- 10. Partying in the annual higher education students' spring holiday "Juwenalia" among beers and concerts



Source: <https://study.gov.pl/25-things-do-poland>(access : 22.08.2023)

Transportation in warsaw

In Warsaw we use 4 means of transport:



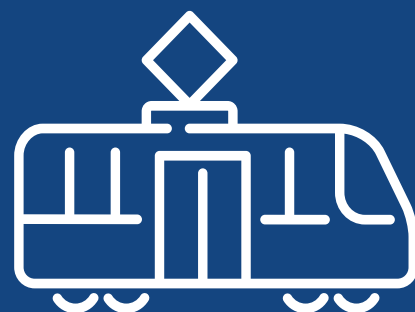
BUS



METRO



SKM TRAIN



TRAM

TICKETS:

SINGLE-USE TICKETS

20 minutes ticket (valid in zone 1 and 2)

20 minutes ticket entitles to an unlimited number of journeys for a period not exceeding 20 minutes from its validation costs: standard ticket: 3,40 PLN; reduced ticket: 1,70 PLN

75 minutes ticket (valid in zone 1)

Single fare transfer ticket entitles to an unlimited number of journeys for a period not exceeding 75 minutes from its validation or entitling to a single journey to a stop or station which is the last on the route. costs: standard ticket: 4,40 PLN; reduced ticket: 2,20 PLN

GROUP TICKET

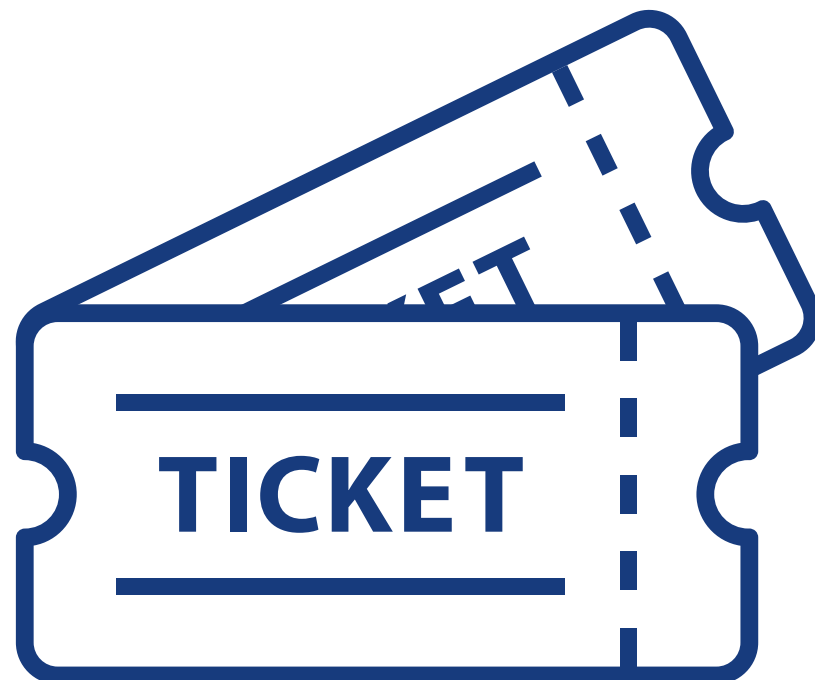
75 minutes Single fare transfer group ticket entitles a group up to 10 people to an unlimited number of journeys for a period not exceeding 75 minutes from its validation or entitling to a single journey to a stop or station which is the last on the route. costs: reduced ticket : 22 PLN

ONE DAY TICKET

Elektroniczna Legitymacja Studencka/ Student Electronic Card (ELS) acts as a carrier of long term tickets similar to Warszawska Karta Miejska (Warsaw City Card). A 30-day city travel card and a 90-day city travel card may be coded on it.

WARSAW CITY CARD AND STUDENT ELECTRONIC CARD

Elektroniczna Legitymacja Studencka/ Student Electronic Card (ELS) acts as a carrier of long term tickets similar to Warszawska Karta Miejska (Warsaw City Card). A 30-day city travel card and a 90-day city travel card may be coded on it.



Source : <https://www.wtp.waw.pl/en/warsaw-city-card/types-of-carriers/student-electronic-card/>, (access: 24.08.2023)

30-day tickets

Tickets entitles to unlimited number of journeys from its until 23:59 of the thirtieth day of its validity

Personal tickets are issued on personalised WKM cards (Warsaw City Card) with a photo, and full name of the holder being printed on the card.

30-day personal	zone: 1	standard: 110 zł	reduced-fare: 55 zł
30-day personal	zone: 2	standard: 112 zł	reduced-fare: 56 zł
30-day personal	zone: 1+2	standard: 180 zł	reduced-fare: 90 zł
30-day Varsovian	zone: 1+2	standard: 98 zł	reduced-fare: 49 zł
30-day Young Varsovian	zone: 1+2	-	reduced-fare: 49 zł
30-day Bearer Travelcard	zone: 1+2	standard: 230 zł	reduced-fare: 115 zł

90-day tickets

Ticket entitles to unlimited number of journeys from its until 23:59 of the ninetieth day of its validity.

Personal tickets are issued on personalised WKM cards (Warsaw City Card) with a photo, and full name of the holder being printed on the card.

90-day personal	zone: 1	standard: 280 zł	reduced-fare: 140 zł
90-day personal	zone: 2	standard: 282 zł	reduced-fare: 141 zł
90-day personal	zone: 1+2	standard: 460 zł	reduced-fare: 230 zł
90-day Varsovian	zone: 1+2	standard: 250 zł	reduced-fare: 125 zł
90-day Young Varsovian	zone: 1+2	-	reduced-fare: 125 zł
90-day Bearer Travelcard	zone: 1+2	standard: 600 zł	reduced-fare: 300 zł

Source : <https://www.wtp.waw.pl/en/ticket-tarif f/long-term -tickets/>, (access: 24.08.2023).

5 TIPS

HOW TO FIND ACCOMMODATION?

PREPARED BY UKSW WELCOME CENTRE

DEAR STUDENTS

AS YOU KNOW OUR UNIVERSITY DOES NOT OFFER ANY ROOMS OR DORMS TO RENT.
We prepared for you short instruction, how to find the best option for living.

1

UKSW WELCOME CENTRE

Feel free to ask us for support in Welcome Centre. You can find us personally at Wóycickiego Campus or send us e-mail: welcome.centre@uksw.edu.pl
We are ready to help you in need.



ESN UKSW

Erasmus Student Network is a student organisation providing help and social activities for exchange students. More info you can find on Facebook or Instagram.

2

3

RENTAL OFFERS

We prepared for you verified offers by hostels or agencies where you can find rooms to rent. Check more details below.



HOSTELS

Hostels are cheap options for living. More details you can find below.

4

5

ASK FOR HELP YOUR ESN MENTOR

Mentors are volunteers, students which are ready to help you in need. Don't hesitate to ask them for support.



HOSTEL POLONEZ

📍 Witkiewicza 10, 03-305 Warszawa

📞 790-022-282

✉️ rezerwacje@hostelpolonez.com

www.hostelpolonez.pl



VOLA HOSTEL

📍 Górczewska 30, Warszawa

📞 tel. +48 786 86 94 68

www.volahostel.pl

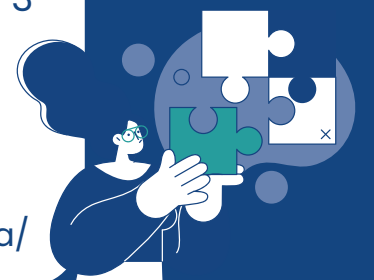


HOSTEL OLIWKA

📍 pl. Jana Henryka Dabrowskiego 3
00-057 Warszawa

📞 +48 881 581 197

www.facebook.com/Oliwkawarszawa/



ONLINE PLATFORMS:

- www.erasmusu.com/en/student-housing/warsaw
- www.erasmusplay.com/en/warszawa.html
- www.nestpick.com/student-accomodation/warsaw
- www.pepehousing.com/warszawa/search
- www.rooms4u-waw.buisness.site
- www.agoda.com



HOSTELS:

- www.hostelchmielna5roomsapartments.stay-poland.website/en/
- www.hotelswarsaw.org
- www.student-house.pl
- www.aohostels.com

CONTACT & SOCIAL MEDIA:

ESN UKSW:

- f [esn.uksw](https://www.facebook.com/esn.uksw)
- @ [esn.uksw](https://www.instagram.com/esn.uksw)

UKSW WELCOME CENTRE:

- ✉ welcome.centre@uksw.edu.pl
- f [UKSWWelcomeCentre](https://www.facebook.com/UKSWWelcomeCentre)
- @ [uksw_welcome_centre](https://www.instagram.com/uksw_welcome_centre)
- 🎵 [uksw.welcome.centre](https://www.spotify.com/uksw.welcome.centre)



LEGISLATION OF STAY FOR EU CITIZENS

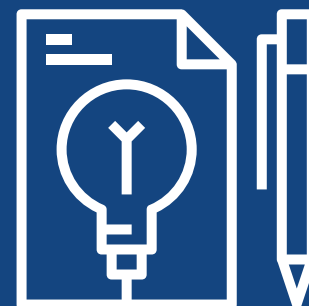
PREPARED BY UKSW WELCOME CENTRE

WHEN TO APPLY?

No later than on the last day after 3 months from the date of entry into the territory of Poland.

WHERE TO SUBMIT?

Correctly and completely filled out proposal in Polish, submit in person at the Department for Foreigners in Warsaw at ul. Marszałkowska 3/5, mezzanine, stand 21 (take a number with the letter "I").



WHAT DOCUMENTS TO SUBMIT ?

- proposal in one copy, completed in Polish as instructed;
- 4 photos;
- photocopy a valid travel document or another document confirming identity and citizenship (original available for inspection)
- a certificate from a state or non-state higher education institution about admission to studies or referral to vocational training;
- health insurance document;
- a written statement that you have sufficient financial resources to support yourself and your family members

HOW TO GET A CERTIFICATE OF RESIDENCE REGISTRATION?

You collect the residence registration certificate in person at the Department for Foreigners, stand 21, ul. Marszałkowska 3/5 Warszawa, you need to take a ticket with the letter "V".

HEALTHCARE FOR INTERNATIONAL STUDENTS

PREPARED BY UKSW WELCOME CENTRE

INSURANCE

- European Health Insurance Card (EHIC)/for EU Students+ Norway
- General / Private Health Insurance / For Others

EMERGENCY DEPARTMENTS

- Hospital Emergency Department (SOR)
- Night&Holiday Care (NiŚOZ)

NATIONAL HEALTH FUND (NFZ)

- www.nfz.gov.pl

The Masovian branch of the National Health Fund:
Mazowiecki Oddział Wojewódzki Narodowego Funduszu Zdrowia
Chałubińskiego 8, 00-613 Warsaw
tel. (+48) 22 279 760 82

EUROPEAN HEALTH INSURANCE CARD (EHIC)

- www.ekuz.nfz.gov.pl

POLISH SOCIAL INSURANCE INSTITUTION (ZUS)

- www.zus.pl/english

THE AMBULANCE SERVICE



112

International
Emergency Number

999

Polish Ambulance
Emergency Service

If you have signed a contract with the National Health Fund or you have a European Health Insurance Card (EHIC), you are entitled to basic health care provided by one of the institutions contracted by the National Health Fund.

Remember to take with you the following documents:

- a copy of your passport/national ID,
- European Health Insurance Card/Insurance confirmation

You can also visit one of several private health centres on a payment basis.

Useful expressions:

- Cześć - Hello
- Dzień dobry - Good morning
- Do widzenia - Goodbye
- Dobry wieczór - Good evening
- Jak się masz? - How are you?
- Proszę - Please
- Dziękuję - Thank you
- Przepraszam - I'm sorry
- Tak - Yes
- Nie - No
- Dobrze - Good
- Źle - Bad
- Ile kosztuje? - How much is it?
- Miło Cię poznać - Nice to meet you
- Akademiak - Dormitory
- Dziekanat - Dean's Office
- Biblioteka - Library
- Stołówka - Canteen
- Gdzie to jest? - Where is it?
- Kto to jest? - Who's that?
- Jestem studentem. - I am a student.
- Kolega - Friend (man)
- Koleżanka - Friend (woman)



Dział Współpracy Międzynarodowej - International Relations Department
Centrum Wsparcia Studenta - Student Support Centre
Centrum Wsparcia Dydaktyki - Education Process Support Centre
Dział Kształcenia - Teaching Process Department
Dział Pomocy Materialnej - Material Support Department
Biuro Rekrutacji - Recruitment Office



UKSW

CARDINAL STEFAN
WYSZYŃSKI UNIVERSITY
IN WARSAW



UKSW Welcome Centre
Wóycickiego 1/3 Street, build. 23, room 113
01-938 Warsaw, Poland



welcome.centre@uksw.edu.pl

f UKSWWelcomeCentre

@ uksw_welcome_centre

♪ uksw.welcome.centre



The Project funded by the Polish National Agency for Academic Exchange
under the Welcome to Poland Programme (2022)